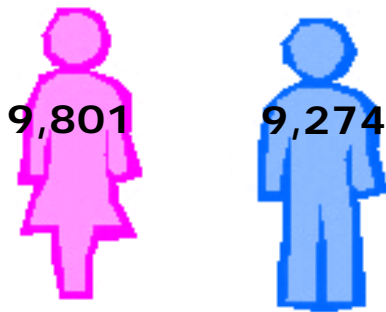




2006 Data Profile for Central Shenandoah Health District sites

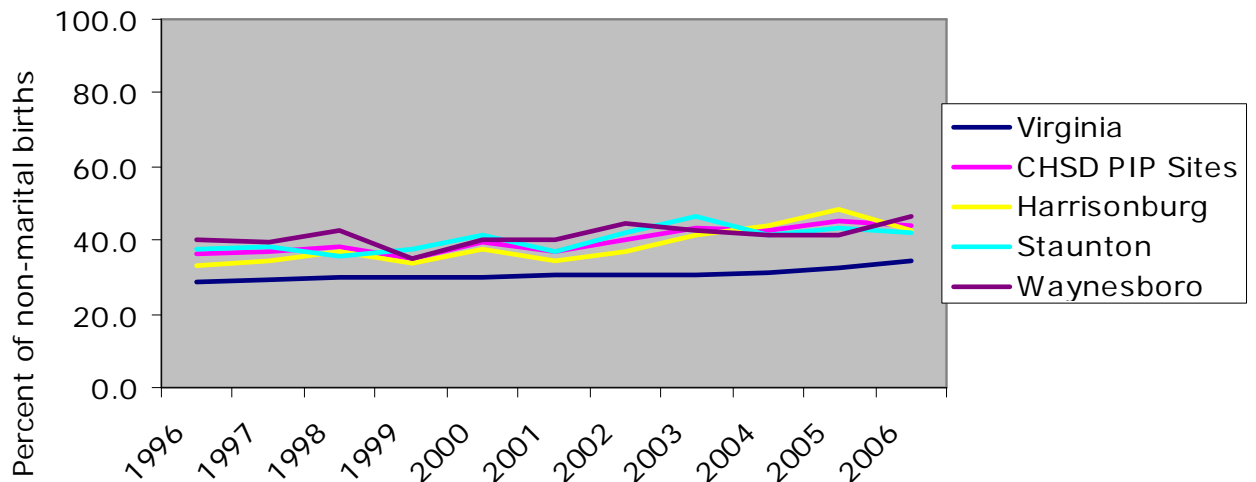
Goal: to reduce the number of non-marital births by preventing unplanned pregnancy through the promotion of healthy relationships, personal responsibility, career and goal setting, effective family planning and the benefits of committed, stable parenting.

2006 Female and Male Population aged 20-29 in areas served by Central Shenandoah Health District



- Target population: Single men and women aged 20 to 29 years.
- Central Shenandoah Health District (CSHD) serves the cities of Harrisonburg, Waynesboro, and Staunton of the PIP program.
- In the cities served by the CSHD, 43.2% of women aged 20-29 were unmarried at the time of birth in 2006.

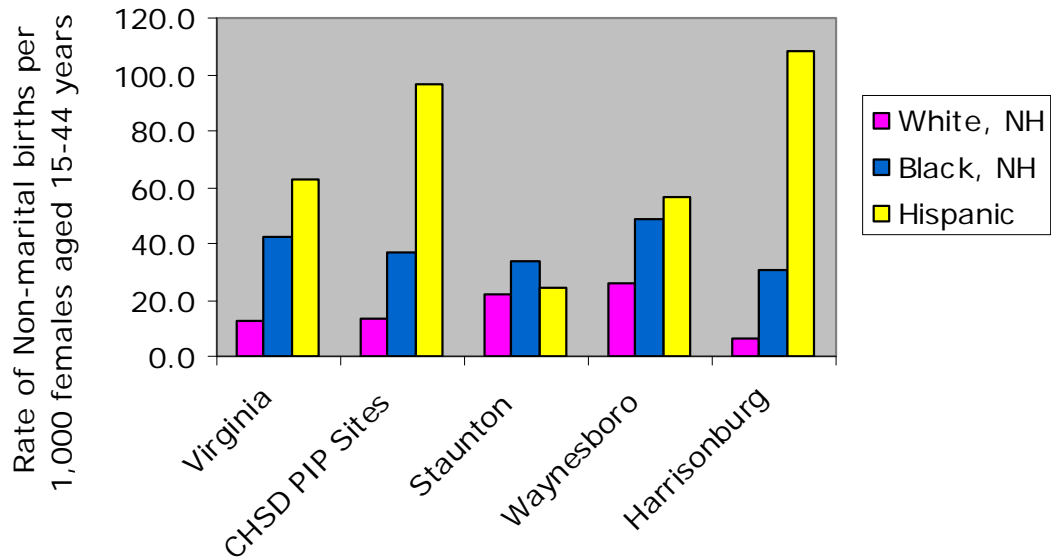
Non-marital birth trends, 1996-2006





2006 Data Profile for Central Shenandoah Health District sites

Racial and Ethnic Disparities, 2006



Racial and Ethnic Disparities, 2006

Location	White, non-Hispanic		Black, non-Hispanic		Hispanic, any race		Other, non-Hispanic		Total	
	N	Rate	N	Rate	N	Rate	N	Rate	N	Rate
Virginia	13421	12.7	14818	42.0	7241	62.9	810	7.8	36290	22.3
CHSD PIP Sites	238	13.5	74	36.5	146	96.2	9	12.0	467	21.3
Staunton	84	21.8	22	33.4	2	24.1	2	27.8	110	23.5
Waynesboro	88	25.6	28	48.7	13	56.8	1	20.4	130	30.3
Harrisonburg	66	6.4	24	30.3	131	108.6	6	9.5	227	17.5